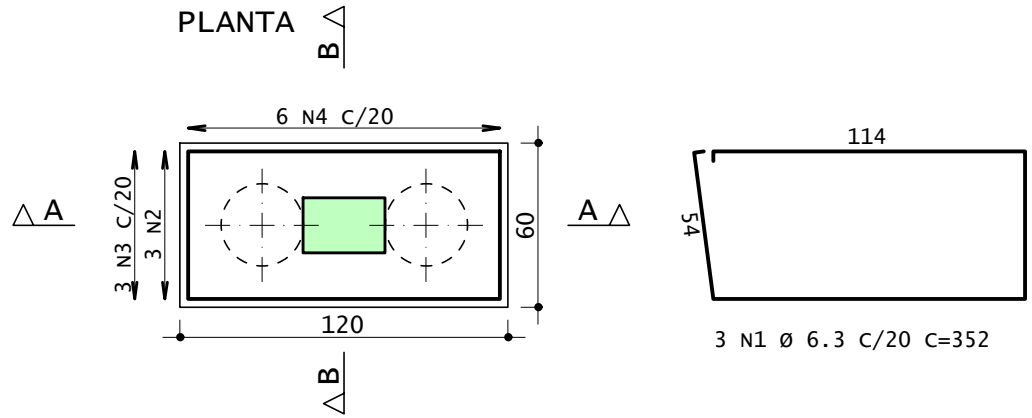
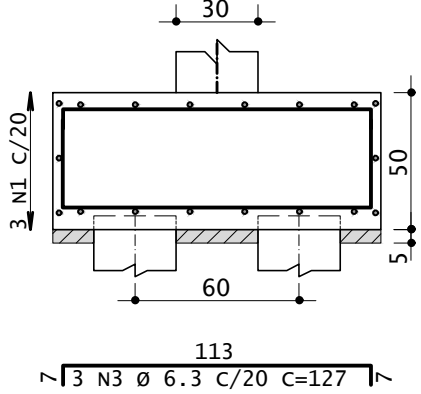


B19
(ESCALA 1:25)

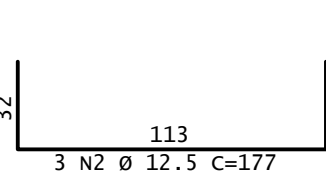
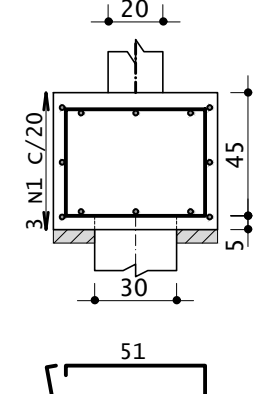
PLANTA



CORTE A - A



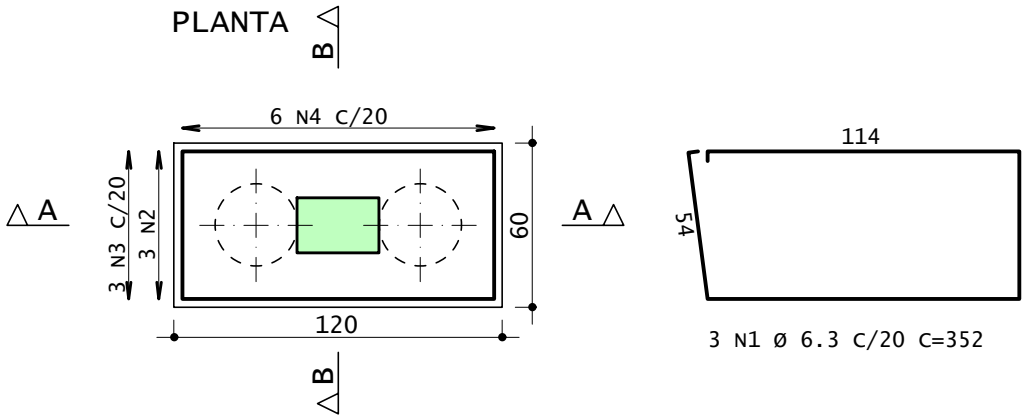
CORTE B - B



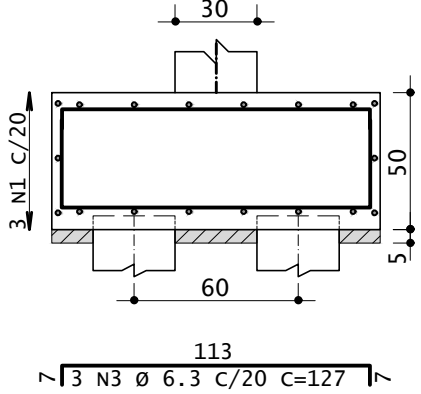
6 N4 Ø 6.3 C/20 C=196

B20
(ESCALA 1:25)

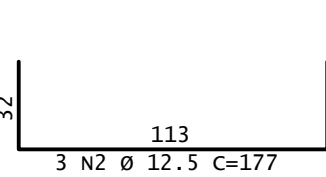
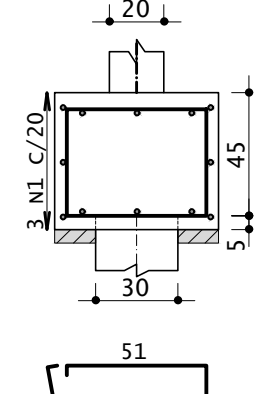
PLANTA



CORTE A - A



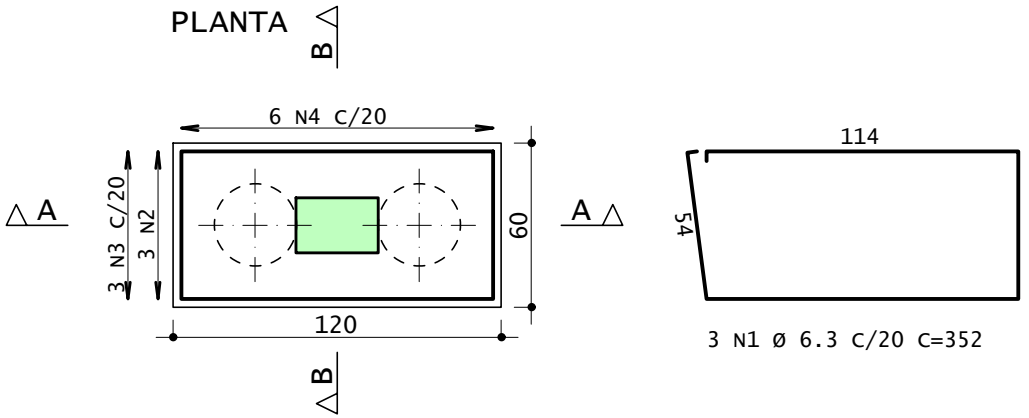
CORTE B - B



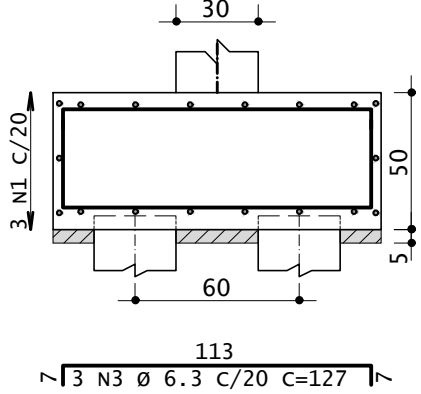
6 N4 Ø 6.3 C/20 C=196

B21
(ESCALA 1:25)

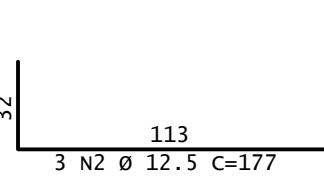
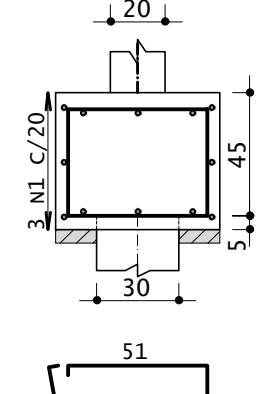
PLANTA



CORTE A - A



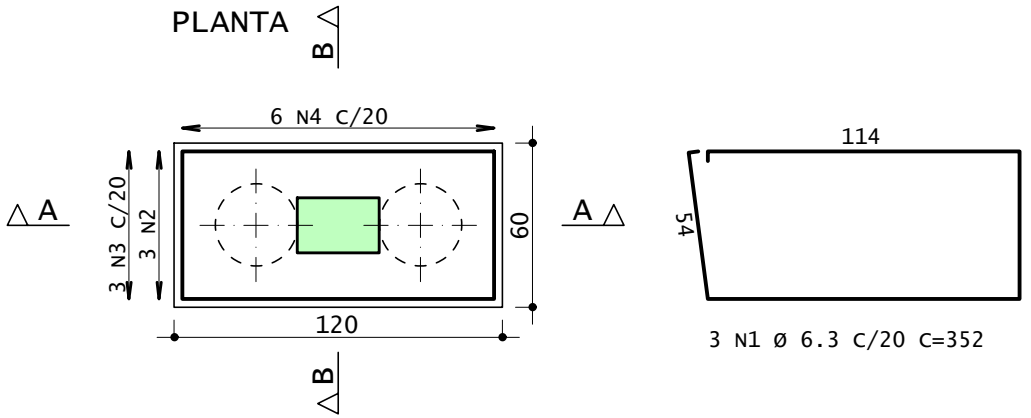
CORTE B - B



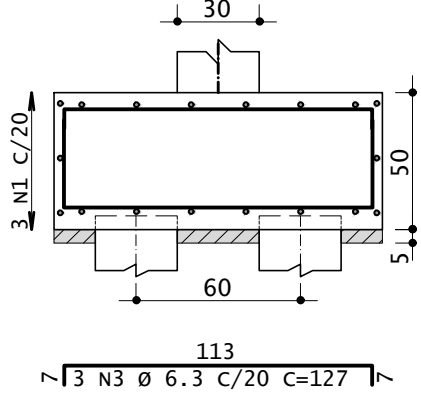
6 N4 Ø 6.3 C/20 C=196

B22
(ESCALA 1:25)

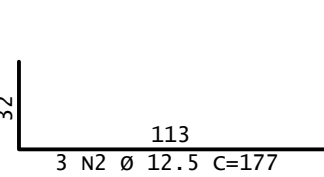
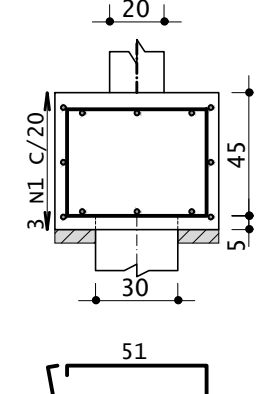
PLANTA



CORTE A - A



CORTE B - B



6 N4 Ø 6.3 C/20 C=196

| AÇO | POS | BIT mm | QUANT | COMPRIMENTO | | |
|-----|-----|-----------|-------|-------------|-------------|--|
| | | | | UNIT cm | TOTAL cm | |
| B19 | | | | | | |
| 50A | 1 | 6.3 | 3 | 352 | 1056 | |
| 50A | 2 | 12.5 | 3 | 177 | 531 | |
| 50A | 3 | 6.3 | 3 | 127 | 381 | |
| 50A | 4 | 6.3 | 6 | 196 | 1176 | |
| B20 | | | | | | |
| 50A | 1 | 6.3 | 3 | 352 | 1056 | |
| 50A | 2 | 12.5 | 3 | 177 | 531 | |
| 50A | 3 | 6.3 | 3 | 127 | 381 | |
| 50A | 4 | 6.3 | 6 | 196 | 1176 | |
| B21 | | | | | | |
| 50A | 1 | 6.3 | 3 | 352 | 1056 | |
| 50A | 2 | 12.5 | 3 | 177 | 531 | |
| 50A | 3 | 6.3 | 3 | 127 | 381 | |
| 50A | 4 | 6.3 | 6 | 196 | 1176 | |
| B22 | | | | | | |
| 50A | 1 | 6.3 | 3 | 352 | 1056 | |
| 50A | 2 | 12.5 | 3 | 177 | 531 | |
| 50A | 3 | 6.3 | 3 | 127 | 381 | |
| 50A | 4 | 6.3 | 6 | 196 | 1176 | |

| RESUMO DE AÇO | | | |
|---------------|-----------|------------|-------------|
| AÇO | BIT mm | COMPR m | PESO kgf |
| 50A | 6.3 | 105 | 26 |
| 50A | 12.5 | 21 | 20 |
| Σ Aço=Total | | | 46 kgf |

CARIMBO DE APROVAÇÕES :



TIPO DE USO :
CENTRO COMUNITÁRIO - PIRES BELO

| | | | | |
|-------------|--|------------|-------------------------------|--------------------------|
| ARQUITETURA | ENDEREÇO DA OBRA : DISTRITO DE PIRES BELO | | | |
| | PROPRIETÁRIO : | | | |
| | FUNDO MUNICIPAL DE SAÚDE | | CNPJ/CPF nº. 03532661/0001-56 | |
| | AUTOR DO PROJETO : LEONARDO MARTINS DE CASTRO TEIXEIRA RESPONSÁVEL TÉCNICO : | | | Nº DA PRANCHA : 03/03 |
| | LEONARDO MARTINS DE CASTRO TEIXEIRA CREA nº. 7455/D-GO | | | |
| DESCRIÇÃO : | | ÁREAS : | | |
| ESCALA : | | DATA : | DESENHO : | REVISÃO : |
| Indicadas | | junho/2023 | Murilo | |